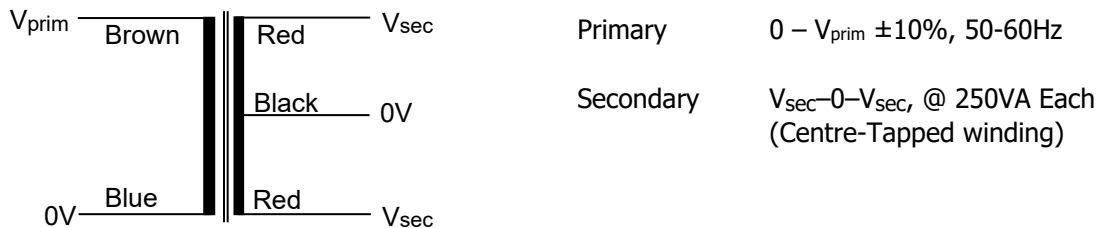


Standard Control Panel Toroidal Transformers

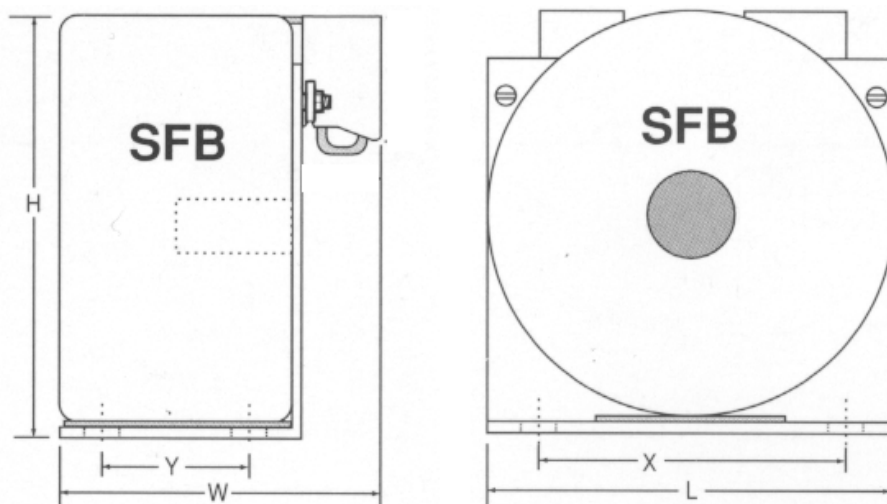
Series SFB0500 : 500VA Total power rating



Nuvotem Talema Part Number	Primary V _{prim} [V]	Full Load V _{sec} [V]	Rated Current Per Sec [A]	No Load V _{sec} [V]
** SFB0500-230-12	230	12-0-12	20.833	12.61-0-12.61
**** SFB0500-230-24	230	24-0-24	10.417	25.60-0-25.60
SFB0500-230-55	230	55-0-55	4.545	58.61-0-58.61
** SFB0500-400-12	400	12-0-12	20.833	12.61-0-12.61
**** SFB0500-400-24	400	24-0-24	10.417	25.60-0-25.60
SFB0500-400-55	400	55-0-55	4.545	58.61-0-58.61

Temperature Class: Winding Wire (Primary & Secondary) Class H (180°C)
 Insulation between windings Class B (130°C)
 Connection lead insulation Class A (105°C)

Standards: Designed and manufactured to conform to the requirements of :
 EN61558 Class II, Non-Short-Circuit-Proof
 EN60065 Class II (IEC65)



Physical Data Dimensions (L x W x H) 135 x 82 x 138mm
*Items *** 135 x **103** x 138mm (Due to larger terminals)
 Mounting Holes (X x Y) 113 x 41mm between centres
 Approximate Weight 4.20 Kg

Terminations Screw terminals suitable for conductors 0.5mm² to 4mm², rated at 16A (VDE0551)
 Material : Polyamide 6/6 (PA 6/6), Meets requirements of VBG4 and VDE0106, part 100, "Finger Safety Guard" VDE0470, Part 1
**** Note :** *Items marked ** have two secondary terminals suitable for 2.5mm² to 16mm², which are rated at 63A (VDE0551), with two terminals for 0V.*
****** Note :** *Items marked **** have 2 terminals for 0V (4mm²)*

Regional Locations - Design, Manufacturing, Sales & Marketing
Talema Group Global Offices
North America
**United States
(Sales & Marketing)**

Talema Group, LLC
 PO Box 935
 900 Innovation Drive
 Suite 120, Rolla
 Missouri 65402
 Tel: +1 573-303-3675
 E-Mail:
 sales@talema.com
 Web: talema.com

Asia
India

(Design, Manufacturing, Sales & Marketing)

Administrative Office

Talema Electronic India Private Limited
 Door No. 221, 1st and 2nd Floor
 KJ Plaza, Opp.to Vidya Mandir School
 Meyanur Main Road
 Salem - 636 004 Tamil Nadu INDIA.
 Tel: +91 427 - 243 3100
 Fax: +91 427 - 243 3109
 E-Mail: talema@talemaindia.net
 Web: talema.com

Factory Premises

Talema Electronic India Private Limited
 No. 31 & 31, Electronic Industrial Estate
 Suramangalam Post
 Salem - 636 005 Tamil Nadu INDIA
 Tel: +91 427 - 243 3000
 E-Mail: talema@talemaindia.net
 Web: talema.com

Europe
**Germany
(Design, Sales & Marketing)**

Talema Elektronik GmbH
 Sembdnerstr. 5
 82110 Germering
 Tel: +49 89 - 841 00 - 0
 Fax: +49 89 - 841 00 25
 E-Mail: info@talema.de
 Web: talema.com

**Ireland
(Design, Sales & Marketing)**

Nuvotem TEO
 Units W & X, Gweedore Business Park
 Derrybeg, Letterkenny, Co. Donegal
 Tel: +353 (0) 74 95 48666
 Fax: +353 (0) 74 95 48139
 E-Mail: info@nuvotem.com
 Web: talema.com

**Czech Republic
(Design, Manufacturing, Sales & Marketing)**

NT Magnetics s.r.o.
 Chebská 27
 322 00 Plzeň
 Tel: +420 377 - 338 351
 Fax: +420 377 - 338 350
 E-Mail: talema@talema.cz
 Web: talema.com

Locations of Talema Group Global Offices
