

## MMJ Series • ISDN S<sub>0</sub> Miniature SMD Interface Modules

### Features

- Excellent output characteristics ensure compliance with CCITT.I.430 pulse waveform template when used with recommended IC pairing
- SMD modules are designed for pick and place compatability
- Excellent and consistent balance between windings
- Modular design maximizes suppression effectivity and transmission properties
- Full compatibility with all common IC's
- Manufactured in ISO 9001:2015 and ISO 14001:2015 certified Talema facility
- Fully RoHS & REACH Compliant and meets lead free reflow level J-STD-020F
- Operating temperature: -40° to 85°C
- Storage temperature: -40 to +125°C



### Electrical Specifications @ 25°C

Turns Ratio: Bold = IC side windings

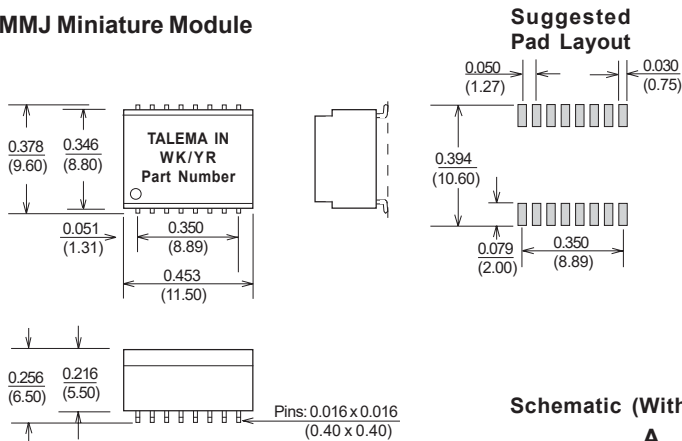
Miniature Chip SMD Modules comply with Functional Insulation Level EN60950, UL1950 and UL1459

Part Number	L <sub>p</sub> (mH Min)	Turns Ratio	L <sub>L</sub> (μH Max)	C <sub>C</sub> (pF Max)	R <sub>CU</sub> P (Ohms)	R <sub>CU</sub> S (Ohms)	V <sub>P</sub> (Vrms)	Schematic
MMJ-100A or B-XXX	25	1:1:1:1	5	50	2.7	3.3	1500	A or B
MMJ-103A or B-XXX	25	1:1: <b>2:2</b>	5	50	3.7	8.4	1500	A or B
MMJ-105A or B-XXX	25	1:1: <b>2.5:2.5</b>	5	50	5.2	10.5	1500	A or B

#### Common Mode Choke

Basic P/N + Suffix	L <sub>N</sub> (μH)	R <sub>CU</sub> (Ohms)	Basic P/N + Suffix	R <sub>CU</sub> (Ohms)	Basic P/N + Suffix	R <sub>CU</sub> (Ohms)
MMJ-100A-000	No Choke		MMJ-103A -000	No Choke	MMJ-105A-000	No Choke
MMJ-100A or B-500	50	0.4	MMJ-103A or B-500	0.5	MMJ-105A or B-500	0.7
MMJ-100A or B-101	100	0.5	MMJ-103A or B-101	0.6	MMJ-105A or B-101	0.9
MMJ-100A or B-501	500	0.4	MMJ-103A or B-501	0.6	MMJ-105A or B-501	0.8
MMJ-100A or B-502	5000	0.8	MMJ-103A or B-502	0.9	MMJ-105A or B-502	1.5

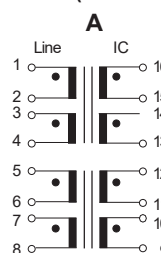
### MMJ Miniature Module



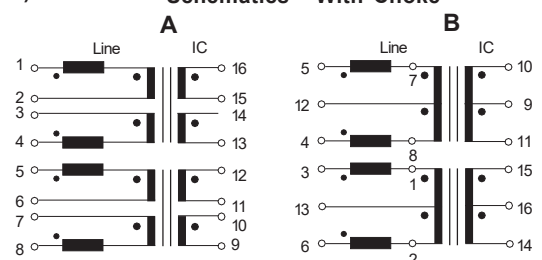
### Test Conditions:

- Polarity and Turns Ratio: ±1%
- Inductance: 25mH minimum, line side windings in series @10KHz/100mV
- Leakage Inductance: Line side windings in series, IC side windings short circuited - measurement @ 100KHz/100mV
- Coupling capacitance: IC side windings in series to Line side windings in series @ 10KHz/100mV
- Common Mode Choke Inductance: 100KHz/20mV
- Test Voltage: 1.5kV for 2 Sec. - Line side windings in series to IC side windings in series

### Schematic (Without Choke)



### Schematics - With Choke



Dimensions: Inches (Millimeters)

Tolerance: ±0.010 (0.25)

unless specified otherwise

Surface Coplanarity will be 0.004 (0.10)

**Packing Method:** Tape and Reel; Qty/Reel: 600 Pcs

**Regional Locations - Design, Manufacturing, Sales & Marketing**

**Talema Group Regional Offices**

**North America**

**United States  
(Sales & Marketing)**

**Talema Group, LLC**  
 PO Box 935  
 900 Innovation Drive  
 Suite 120, Rolla  
 Missouri 65402  
 Tel: +1 573-303-3675  
 E-Mail:  
[sales@talemagroup.com](mailto:sales@talemagroup.com)  
 Web: [www.talema.com](http://www.talema.com)

**Asia**

**India  
(Design, Manufacturing, Sales & Marketing)**

**Administrative Office**  
**Talema Electronic India Private Limited**  
 Door No. 221, 1st and 2nd Floor  
 KJ Plaza, Opp.to Vidya Mandir School  
 Meyanoor Main Road  
 Salem - 636 004 Tamil Nadu INDIA  
 Tel: +91 427 - 243 3100  
 Fax: +91 427 - 243 3109  
 E-Mail: [talema@talemaindia.net](mailto:talema@talemaindia.net)  
 Web: [www.talema.com](http://www.talema.com)

**Factory Premises**  
**Talema Electronic India Private Limited**  
 Plot Nos. 30, 31 Electrical and Electronic  
 Industrial Estate  
 Suramangalam  
 Salem - 636 005 Tamil Nadu INDIA  
 Tel: +91 427 - 243 3000  
 E-Mail: [talema@talemaindia.net](mailto:talema@talemaindia.net)  
 Web: [www.talema.com](http://www.talema.com)

**Europe**

**Germany  
(Design, Sales & Marketing)**

**Talema Elektronik GmbH**  
 Sembdnerstr. 5  
 82110 Germering  
 Tel: +49 89 - 841 00 - 0  
 Fax: +49 89 - 841 00 25  
 E-Mail: [info@talema.de](mailto:info@talema.de)  
 Web: [www.talema.com](http://www.talema.com)

**Ireland  
(Design, Sales & Marketing)**

**Nuvotem TEO**  
 Units W & X, Gweedore Business Park  
 Derrybeg, Letterkenny, Co. Donegal  
 Tel: +353 (0) 74 95 48666  
 Fax: +353 (0) 74 95 48139  
 E-Mail: [info@nuvotem.com](mailto:info@nuvotem.com)  
 Web: [www.nuvotem.com](http://www.nuvotem.com)

**Czech Republic  
(Design, Manufacturing, Sales & Marketing)**

**NT Magnetics s.r.o.**  
 Chebská 27  
 322 00 Plzeň  
 Tel: +420 377 - 338 351  
 Fax: +420 377 - 338 350  
 E-Mail: [talema@talema.cz](mailto:talema@talema.cz)  
 Web: [www.ntmagnetics.cz](http://www.ntmagnetics.cz)

**Locations of Talema Group Regional Offices**

